



## Dundee Elementary School

ID	Task Mode	Task Name	Duration	Start	Finish	2023					Half 2, 2023					Half 1, 2024					Half 2, 2024					Half 1, 2025								
						F	M	A	M	J	J	A	S	O	N	D	J	F	M	A	M	J	J	A	S	O	N	D	J	F	M	A		
42		Set SD MH-12 and plumb back	1 day	Fri 8/11/23	Fri 8/11/23											<b>8/11</b>	▼	Set SD MH-12 and plumb back																
43		Set SD FTMH-11 and plumb back	1 day	Mon 8/14/23	Mon 8/14/23											<b>8/14</b>	▼	Set SD FTMH-11 and plumb back																
44		Install field drainage NE and NW	4 days	Tue 8/15/23	Fri 8/18/23											<b>8/15</b>	▼	Install field drainage NE and NW																
45		Install piping to Edwards for CG-3	1 day	Mon 8/21/23	Mon 8/21/23											<b>8/21</b>	▼	Install piping to Edwards for CG-3																
46		Set SD MH-09 and plumb back	1 day	Tue 8/22/23	Tue 8/22/23											<b>8/22</b>	▼	Set SD MH-09 and plumb back																
47		Set SD MH-08 and plumb back	1 day	Wed 8/23/23	Wed 8/23/23											<b>8/23</b>	▼	Set SD MH-08 and plumb back																
48		Set SD MH-07 and plumb back	1 day	Thu 8/24/23	Thu 8/24/23											<b>8/24</b>	▼	Set SD MH-07 and plumb back																
49		Set SD FTMH-06 and plumb back	1 day	Fri 8/25/23	Fri 8/25/23											<b>8/25</b>	▼	Set SD FTMH-06 and plumb back																
50		Install piping to SD CB-11	1 day	Mon 8/28/23	Mon 8/28/23											<b>8/28</b>	▼	Install piping to SD CB-11																
51		Install piping to SD LD-06	1 day	Tue 8/29/23	Tue 8/29/23											<b>8/29</b>	▼	Install piping to SD LD-06																
52		Install misc. stubs to building	1 day	Wed 8/30/23	Wed 8/30/23											<b>8/30</b>	▼	Install misc. stubs to building																
53		<b>East side system</b>	<b>11 days</b>	<b>Thu 8/31/23</b>	<b>Fri 9/15/23</b>											<b>8/31</b>	▮	<b>East side system</b>																
54		Survey east side storm system	2 days	Thu 8/31/23	Fri 9/1/23											<b>8/31</b>	▼	Survey east side storm system																
55		Set SD SEDMH-02 and plumb to WQ swale	1 day	Tue 9/5/23	Tue 9/5/23											<b>9/5</b>	▼	Set SD SEDMH-02 and plumb to WQ swale																
56		Set SD MH-04 and plumb back	1 day	Wed 9/6/23	Wed 9/6/23											<b>9/6</b>	▼	Set SD MH-04 and plumb back																
57		Set SD MH-03 and plumb back	1 day	Thu 9/7/23	Thu 9/7/23											<b>9/7</b>	▼	Set SD MH-03 and plumb back																
58		Set SD MH-02 and plumb back	1 day	Fri 9/8/23	Fri 9/8/23											<b>9/8</b>	▼	Set SD MH-02 and plumb back																
59		Install piping to SD CB-04 and 05	1 day	Mon 9/11/23	Mon 9/11/23											<b>9/11</b>	▼	Install piping to SD CB-04 and 05																
60		Set SD FTMH-01 and plumb back	1 day	Tue 9/12/23	Tue 9/12/23											<b>9/12</b>	▼	Set SD FTMH-01 and plumb back																
61		Install piping out to 8th St. CG-3	1 day	Wed 9/13/23	Wed 9/13/23											<b>9/13</b>	▼	Install piping out to 8th St. CG-3																
62		Install piping to SD CB-01	1 day	Thu 9/14/23	Thu 9/14/23											<b>9/14</b>	▼	Install piping to SD CB-01																
63		Install misc. stubs to building	1 day	Fri 9/15/23	Fri 9/15/23											<b>9/15</b>	▼	Install misc. stubs to building																
64		<b>South side system</b>	<b>5 days</b>	<b>Mon 9/18/23</b>	<b>Fri 9/22/23</b>											<b>9/18</b>	▮	<b>South side system</b>																
65		Survey south side storm system	1 day	Mon 9/18/23	Mon 9/18/23											<b>9/18</b>	▼	Survey south side storm system																
66		Set SD FCMH-01 and plumb to WQ swale	1 day	Tue 9/19/23	Tue 9/19/23											<b>9/19</b>	▼	Set SD FCMH-01 and plumb to WQ swale																
67		Set SD MH-14 and pipe back	1 day	Wed 9/20/23	Wed 9/20/23											<b>9/20</b>	▼	Set SD MH-14 and pipe back																
68		Set SD MH-15 and plumb back	1 day	Thu 9/21/23	Thu 9/21/23											<b>9/21</b>	▼	Set SD MH-15 and plumb back																
69		Install piping to SD OF-02	1 day	Fri 9/22/23	Fri 9/22/23											<b>9/22</b>	▼	Install piping to SD OF-02																
70		<b>Water System</b>	<b>14 days</b>	<b>Mon 9/25/23</b>	<b>Thu 10/12/23</b>											<b>9/25</b>	▮	<b>Water System</b>																
71		Survey water system	1 day	Mon 9/25/23	Mon 9/25/23											<b>9/25</b>	▼	Survey water system																
72		Set water meter vault	1 day	Tue 9/26/23	Tue 9/26/23											<b>9/26</b>	▼	Set water meter vault																
73		Set dual double check vault	1 day	Wed 9/27/23	Wed 9/27/23											<b>9/27</b>	▼	Set dual double check vault																
74		Connect DW and FW to existing stubs	1 day	Thu 9/28/23	Thu 9/28/23											<b>9/28</b>	▼	Connect DW and FW to existing stubs																
75		Install DW and FW to building	3 days	Fri 9/29/23	Tue 10/3/23											<b>9/29</b>	▼	Install DW and FW to building																
76		Install new FH line to east and south	3 days	Wed 10/4/23	Fri 10/6/23											<b>10/4</b>	▼	Install new FH line to east and south																
77		Stub for irrigation	1 day	Mon 10/9/23	Mon 10/9/23											<b>10/9</b>	▼	Stub for irrigation																
78		Hydro test/inspection	1 day	Tue 10/10/23	Tue 10/10/23											<b>10/10</b>	▼	Hydro test/inspection																
79		Install new fire hydrants	2 days	Wed 10/11/23	Thu 10/12/23											<b>10/11</b>	▼	Install new fire hydrants																
80		<b>Site lighting and power</b>	<b>18 days</b>	<b>Mon 9/18/23</b>	<b>Wed 10/11/23</b>											<b>9/18</b>	▮	<b>Site lighting and power</b>																
81		Survey east side lighting/power	1 day	Mon 9/18/23	Mon 9/18/23											<b>9/18</b>	▼	Survey east side lighting/power																
82		Install conduit and J box for east parking site lighting	1 day	Tue 9/19/23	Tue 9/19/23											<b>9/19</b>	▼	Install conduit and J box for east parking site lighting																
83		Install conduit and j box for east monument sign	1 day	Wed 9/20/23	Wed 9/20/23											<b>9/20</b>	▼	Install conduit and j box for east monument sign																

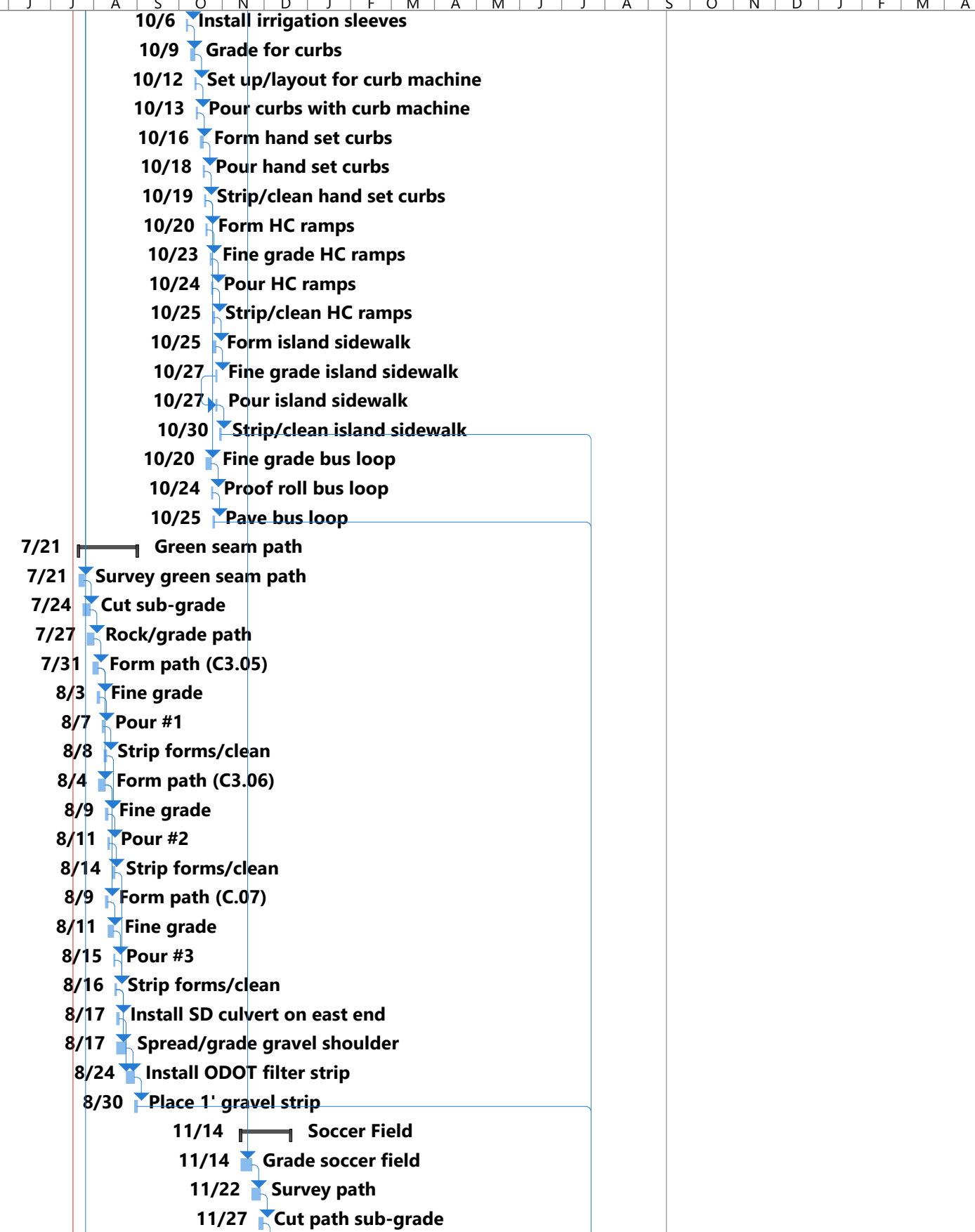
# Dundee Elementary School

ID	Task Mode	Task Name	Duration	Start	Finish	2023					Half 2, 2023					Half 1, 2024					Half 2, 2024					Half 1, 2025											
						F	M	A	M	J	J	A	S	O	N	D	J	F	M	A	M	J	J	A	S	O	N	D	J	F	M	A					
84		Install site lighting conduit for east side parking	5 days	Thu 9/21/23	Wed 9/27/23											9/21	Install site lighting conduit for east side parking																				
85		Install light pole bases	3 days	Thu 9/28/23	Mon 10/2/23											9/28	Install light pole bases																				
86		Install light poles	3 days	Tue 10/3/23	Thu 10/5/23											10/3	Install light poles																				
87		Survey north side bus loop lighting	1 day	Mon 9/18/23	Mon 9/18/23											9/18	Survey north side bus loop lighting																				
88		Install conduit for north side bus loop lights	2 days	Thu 9/28/23	Fri 9/29/23											9/28	Install conduit for north side bus loop lights																				
89		Install light pole bases	1 day	Tue 10/3/23	Tue 10/3/23											10/3	Install light pole bases																				
90		Install light poles	2 days	Fri 10/6/23	Mon 10/9/23											10/6	Install light poles																				
91		Survey west side lighting	1 day	Mon 9/18/23	Mon 9/18/23											9/18	Survey west side lighting																				
92		Install conduit and J box for irrigation controls	1 day	Mon 10/2/23	Mon 10/2/23											10/2	Install conduit and J box for irrigation controls																				
93		Install conduit for west side sight lighting	2 days	Mon 10/2/23	Tue 10/3/23											10/2	Install conduit for west side sight lighting																				
94		Install pole bases for west side sight lights	2 days	Wed 10/4/23	Thu 10/5/23											10/4	Install pole bases for west side sight lights																				
95		Install light poles	2 days	Tue 10/10/23	Wed 10/11/23											10/10	Install light poles																				
96		<b>East parking lot</b>	<b>26 days</b>	<b>Tue 10/3/23</b>	<b>Tue 11/7/23</b>											10/3	East parking lot																				
97		Survey curbs, ramps	2 days	Tue 10/3/23	Wed 10/4/23											10/3	Survey curbs, ramps																				
98		Install irrigation sleeves	2 days	Wed 10/4/23	Thu 10/5/23											10/4	Install irrigation sleeves																				
99		Grade for curbs	4 days	Wed 10/4/23	Mon 10/9/23											10/4	Grade for curbs																				
100		Set up/layout for curb machine	2 days	Mon 10/9/23	Tue 10/10/23											10/9	Set up/layout for curb machine																				
101		Pour curbs with curb machine	1 day	Wed 10/11/23	Wed 10/11/23											10/11	Pour curbs with curb machine																				
102		Form hand set curbs	5 days	Thu 10/12/23	Wed 10/18/23											10/12	Form hand set curbs																				
103		Pour hand set curbs	2 days	Wed 10/18/23	Thu 10/19/23											10/18	Pour hand set curbs																				
104		Strip/clean hand set curbs	2 days	Thu 10/19/23	Fri 10/20/23											10/19	Strip/clean hand set curbs																				
105		Form HC ramps	2 days	Mon 10/23/23	Tue 10/24/23											10/23	Form HC ramps																				
106		Fine grade HC ramps	1 day	Wed 10/25/23	Wed 10/25/23											10/25	Fine grade HC ramps																				
107		Pour HC ramps	2 days	Thu 10/26/23	Fri 10/27/23											10/26	Pour HC ramps																				
108		Strip/clean HC ramps	1 day	Mon 10/30/23	Mon 10/30/23											10/30	Strip/clean HC ramps																				
109		Form island sidewalks	2 days	Mon 10/23/23	Tue 10/24/23											10/23	Form island sidewalks																				
110		Fine grade island sidewalks	1 day	Wed 10/25/23	Wed 10/25/23											10/25	Fine grade island sidewalks																				
111		Pour island sidewalks	2 days	Thu 10/26/23	Fri 10/27/23											10/26	Pour island sidewalks																				
112		Strip/clean island sidewalks	1 day	Mon 10/30/23	Mon 10/30/23											10/30	Strip/clean island sidewalks																				
113		Rock/fine grade parking lot	3 days	Tue 10/31/23	Thu 11/2/23											10/31	Rock/fine grade parking lot																				
114		Proof roll parking lot	1 day	Fri 11/3/23	Fri 11/3/23											11/3	Proof roll parking lot																				
115		Pave east parking lot	2 days	Mon 11/6/23	Tue 11/7/23											11/6	Pave east parking lot																				
116		<b>Fire truck access loop and courtyard access paths</b>	<b>28 days</b>	<b>Thu 10/5/23</b>	<b>Mon 11/13/23</b>											10/5	Fire truck access loop and courtyard access paths																				
117		Survey access road and courtyard access paths	1 day	Thu 10/26/23	Thu 10/26/23											10/26	Survey access road and courtyard access paths																				
118		Install irrigation sleeves	1 day	Fri 10/27/23	Fri 10/27/23											10/27	Install irrigation sleeves																				
119		Grade/fine grade courtyard paths	2 days	Mon 10/30/23	Tue 10/31/23											10/30	Grade/fine grade courtyard paths																				
120		Grade/fine grade access road	3 days	Tue 10/31/23	Thu 11/2/23											10/31	Grade/fine grade access road																				
121		Proof roll access road	1 day	Fri 11/3/23	Fri 11/3/23											11/3	Proof roll access road																				
122		Pave access road and courtyard access paths	2 days	Wed 11/8/23	Thu 11/9/23											11/8	Pave access road and courtyard access paths																				
123		Grade for conveyance swale	2 days	Fri 11/10/23	Mon 11/13/23											11/10	Grade for conveyance swale																				
124		<b>Bus loop</b>	<b>18 days</b>	<b>Thu 10/5/23</b>	<b>Mon 10/30/23</b>											10/5	Bus loop																				
125		Survey curbs, ramps	1 day	Thu 10/5/23	Thu 10/5/23											10/5	Survey curbs, ramps																				



# Dundee Elementary School

ID	Task Mode	Task Name	Duration	Start	Finish	2023					Half 2, 2023					Half 1, 2024					Half 2, 2024					Half 1, 2025				
						F	M	A	M	J	J	A	S	O	N	D	J	F	M	A	M	J	J	A	S	O	N	D	J	F
126		Install irrigation sleeves	1 day	Fri 10/6/23	Fri 10/6/23																									
127		Grade for curbs	3 days	Mon 10/9/23	Wed 10/11/23																									
128		Set up/layout for curb machine	1 day	Thu 10/12/23	Thu 10/12/23																									
129		Pour curbs with curb machine	1 day	Fri 10/13/23	Fri 10/13/23																									
130		Form hand set curbs	2 days	Mon 10/16/23	Tue 10/17/23																									
131		Pour hand set curbs	1 day	Wed 10/18/23	Wed 10/18/23																									
132		Strip/clean hand set curbs	1 day	Thu 10/19/23	Thu 10/19/23																									
133		Form HC ramps	1 day	Fri 10/20/23	Fri 10/20/23																									
134		Fine grade HC ramps	1 day	Mon 10/23/23	Mon 10/23/23																									
135		Pour HC ramps	1 day	Tue 10/24/23	Tue 10/24/23																									
136		Strip/clean HC ramps	1 day	Wed 10/25/23	Wed 10/25/23																									
137		Form island sidewalk	2 days	Wed 10/25/23	Thu 10/26/23																									
138		Fine grade island sidewalk	1 day	Fri 10/27/23	Fri 10/27/23																									
139		Pour island sidewalk	1 day	Fri 10/27/23	Fri 10/27/23																									
140		Strip/clean island sidewalk	1 day	Mon 10/30/23	Mon 10/30/23																									
141		Fine grade bus loop	2 days	Fri 10/20/23	Mon 10/23/23																									
142		Proof roll bus loop	1 day	Tue 10/24/23	Tue 10/24/23																									
143		Pave bus loop	1 day	Wed 10/25/23	Wed 10/25/23																									
144		<b>Green seam path</b>	<b>30 days</b>	<b>Fri 7/21/23</b>	<b>Thu 8/31/23</b>																									
145		Survey green seam path	2 days	Fri 7/21/23	Mon 7/24/23																									
146		Cut sub-grade	5 days	Mon 7/24/23	Fri 7/28/23																									
147		Rock/grade path	3 days	Thu 7/27/23	Mon 7/31/23																									
148		Form path (C3.05)	4 days	Mon 7/31/23	Thu 8/3/23																									
149		Fine grade	2 days	Thu 8/3/23	Fri 8/4/23																									
150		Pour #1	1 day	Mon 8/7/23	Mon 8/7/23																									
151		Strip forms/clean	2 days	Tue 8/8/23	Wed 8/9/23																									
152		Form path (C3.06)	3 days	Fri 8/4/23	Tue 8/8/23																									
153		Fine grade	2 days	Wed 8/9/23	Thu 8/10/23																									
154		Pour #2	1 day	Fri 8/11/23	Fri 8/11/23																									
155		Strip forms/clean	2 days	Mon 8/14/23	Tue 8/15/23																									
156		Form path (C.07)	2 days	Wed 8/9/23	Thu 8/10/23																									
157		Fine grade	2 days	Fri 8/11/23	Mon 8/14/23																									
158		Pour #3	1 day	Tue 8/15/23	Tue 8/15/23																									
159		Strip forms/clean	1 day	Wed 8/16/23	Wed 8/16/23																									
160		Install SD culvert on east end	2 days	Thu 8/17/23	Fri 8/18/23																									
161		Spread/grade gravel shoulder	5 days	Thu 8/17/23	Wed 8/23/23																									
162		Install ODOT filter strip	4 days	Thu 8/24/23	Tue 8/29/23																									
163		Place 1' gravel strip	2 days	Wed 8/30/23	Thu 8/31/23																									
164		<b>Soccer Field</b>	<b>24 days</b>	<b>Tue 11/14/23</b>	<b>Tue 12/19/23</b>																									
165		Grade soccer field	6 days	Tue 11/14/23	Tue 11/21/23																									
166		Survey path	2 days	Wed 11/22/23	Mon 11/27/23																									
167		Cut path sub-grade	3 days	Mon 11/27/23	Wed 11/29/23																									





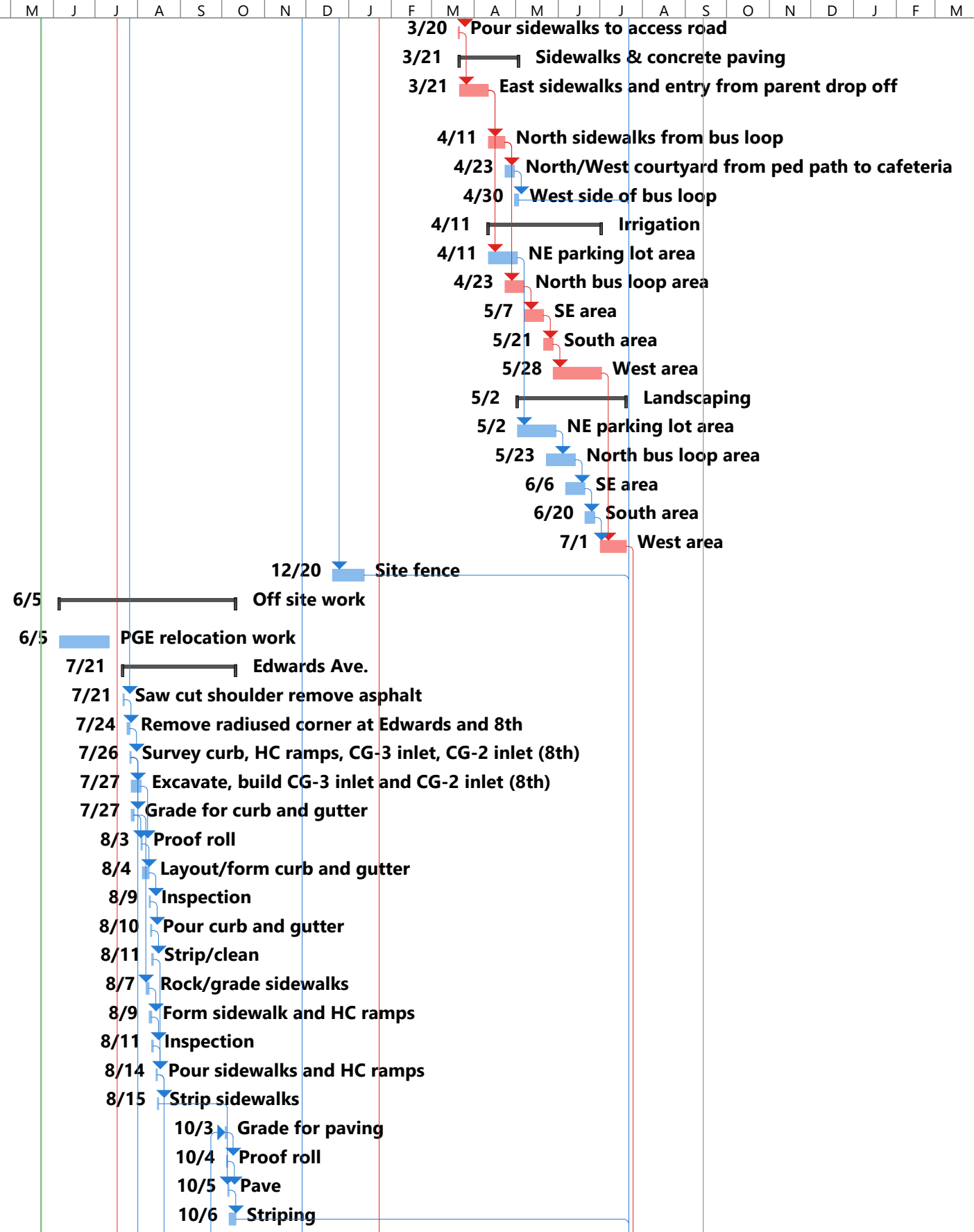
# Dundee Elementary School

ID	Task Mode	Task Name	Duration	Start	Finish	2023					Half 2, 2023					Half 1, 2024					Half 2, 2024					Half 1, 2025						
						F	M	A	M	J	J	A	S	O	N	D	J	F	M	A	M	J	J	A	S	O	N	D	J	F	M	A
210		<b>Entry Benches</b>	<b>9 days</b>	<b>Thu 1/18/24</b>	<b>Tue 1/30/24</b>											<b>1/18</b>	<b>Entry Benches</b>															
211		Survey benches	1 day	Thu 1/18/24	Thu 1/18/24											<b>1/18</b>	Survey benches															
212		Excavate/rock/grade bench base	1 day	Fri 1/19/24	Fri 1/19/24											<b>1/19</b>	Excavate/rock/grade bench base															
213		Form benches	3 days	Mon 1/22/24	Wed 1/24/24											<b>1/22</b>	Form benches															
214		Install rebar	2 days	Wed 1/24/24	Thu 1/25/24											<b>1/24</b>	Install rebar															
215		Inspection	1 day	Fri 1/26/24	Fri 1/26/24											<b>1/26</b>	Inspection															
216		pour benches	1 day	Mon 1/29/24	Mon 1/29/24											<b>1/29</b>	pour benches															
217		Strip and finish benches	1 day	Tue 1/30/24	Tue 1/30/24											<b>1/30</b>	Strip and finish benches															
218		<b>East benches at B and C exits</b>	<b>20 days</b>	<b>Wed 1/31/24</b>	<b>Tue 2/27/24</b>											<b>1/31</b>	<b>East benches at B and C exits</b>															
219		Survey benches	1 day	Wed 1/31/24	Wed 1/31/24											<b>1/31</b>	Survey benches															
220		Excavate/rock/grade bench base	1 day	Thu 2/1/24	Thu 2/1/24											<b>2/1</b>	Excavate/rock/grade bench base															
221		Form benches	2 days	Fri 2/2/24	Mon 2/5/24											<b>2/2</b>	Form benches															
222		Install rebar	1 day	Tue 2/6/24	Tue 2/6/24											<b>2/6</b>	Install rebar															
223		Inspection	1 day	Wed 2/7/24	Wed 2/7/24											<b>2/7</b>	Inspection															
224		pour benches	1 day	Thu 2/8/24	Thu 2/8/24											<b>2/8</b>	pour benches															
225		Strip and finish benches	1 day	Fri 2/9/24	Fri 2/9/24											<b>2/9</b>	Strip and finish benches															
226		Rock/grade concrete entry	2 days	Mon 2/12/24	Tue 2/13/24											<b>2/12</b>	Rock/grade concrete entry															
227		Set landscape boulders	1 day	Wed 2/14/24	Wed 2/14/24											<b>2/14</b>	Set landscape boulders															
228		Form concrete entry	1 day	Thu 2/15/24	Thu 2/15/24											<b>2/15</b>	Form concrete entry															
229		Pour concrete entry	1 day	Fri 2/16/24	Fri 2/16/24											<b>2/16</b>	Pour concrete entry															
230		Rock/grade sidewalk between exits	1 day	Wed 2/14/24	Wed 2/14/24											<b>2/14</b>	Rock/grade sidewalk between exits															
231		Set decorative fence posts	3 days	Thu 2/15/24	Mon 2/19/24											<b>2/15</b>	Set decorative fence posts															
232		Install irrigation sleeves	1 day	Thu 2/15/24	Thu 2/15/24											<b>2/15</b>	Install irrigation sleeves															
233		Form sidewalk between exits	2 days	Tue 2/20/24	Wed 2/21/24											<b>2/20</b>	Form sidewalk between exits															
234		Pour sidewalk between exits (including mow band)	1 day	Thu 2/22/24	Thu 2/22/24											<b>2/22</b>	Pour sidewalk between exits (including mow band)															
235		Install fencing and gates	3 days	Fri 2/23/24	Tue 2/27/24											<b>2/23</b>	Install fencing and gates															
236		<b>West benches at B and C exits</b>	<b>16 days</b>	<b>Wed 2/28/24</b>	<b>Wed 3/20/24</b>											<b>2/28</b>	<b>West benches at B and C exits</b>															
237		Survey benches	1 day	Wed 2/28/24	Wed 2/28/24											<b>2/28</b>	Survey benches															
238		Excavate/rock/grade bench base	1 day	Thu 2/29/24	Thu 2/29/24											<b>2/29</b>	Excavate/rock/grade bench base															
239		Form benches	2 days	Fri 3/1/24	Mon 3/4/24											<b>3/1</b>	Form benches															
240		Install rebar	1 day	Tue 3/5/24	Tue 3/5/24											<b>3/5</b>	Install rebar															
241		Inspection	1 day	Wed 3/6/24	Wed 3/6/24											<b>3/6</b>	Inspection															
242		pour benches	1 day	Thu 3/7/24	Thu 3/7/24											<b>3/7</b>	pour benches															
243		Strip and finish benches	1 day	Fri 3/8/24	Fri 3/8/24											<b>3/8</b>	Strip and finish benches															
244		Rock/grade concrete entry	2 days	Mon 3/11/24	Tue 3/12/24											<b>3/11</b>	Rock/grade concrete entry															
245		Set landscape boulders	1 day	Wed 3/13/24	Wed 3/13/24											<b>3/13</b>	Set landscape boulders															
246		Form concrete entry	1 day	Thu 3/14/24	Thu 3/14/24											<b>3/14</b>	Form concrete entry															
247		Pour concrete entry	1 day	Fri 3/15/24	Fri 3/15/24											<b>3/15</b>	Pour concrete entry															
248		Rock/grade sidewalks to access road	1 day	Mon 3/18/24	Mon 3/18/24											<b>3/18</b>	Rock/grade sidewalks to access road															
249		Install irrigation sleeves	1 day	Tue 3/19/24	Tue 3/19/24											<b>3/19</b>	Install irrigation sleeves															
250		Form sidewalks to access road	1 day	Tue 3/19/24	Tue 3/19/24											<b>3/19</b>	Form sidewalks to access road															



# Dundee Elementary School

ID	Task Mode	Task Name	Duration	Start	Finish	2023					Half 2, 2023					Half 1, 2024					Half 2, 2024					Half 1, 2025							
						F	M	A	M	J	J	A	S	O	N	D	J	F	M	A	M	J	J	A	S	O	N	D	J	F	M	A	
251		Pour sidewalks to access road	1 day	Wed 3/20/24	Wed 3/20/24																												
252		<b>Sidewalks &amp; concrete paving</b>	<b>31 days</b>	<b>Thu 3/21/24</b>	<b>Thu 5/2/24</b>																												
253		East sidewalks and entry from parent drop off	15 days	Thu 3/21/24	Wed 4/10/24																												
254		North sidewalks from bus loop	8 days	Thu 4/11/24	Mon 4/22/24																												
255		North/West courtyard from ped path to cafeteria	5 days	Tue 4/23/24	Mon 4/29/24																												
256		West side of bus loop	3 days	Tue 4/30/24	Thu 5/2/24																												
257		<b>Irrigation</b>	<b>58 days</b>	<b>Thu 4/11/24</b>	<b>Mon 7/1/24</b>																												
258		NE parking lot area	15 days	Thu 4/11/24	Wed 5/1/24																												
259		North bus loop area	10 days	Tue 4/23/24	Mon 5/6/24																												
260		SE area	10 days	Tue 5/7/24	Mon 5/20/24																												
261		South area	5 days	Tue 5/21/24	Mon 5/27/24																												
262		West area	25 days	Tue 5/28/24	Mon 7/1/24																												
263		<b>Landscaping</b>	<b>57 days</b>	<b>Thu 5/2/24</b>	<b>Fri 7/19/24</b>																												
264		NE parking lot area	20 days	Thu 5/2/24	Wed 5/29/24																												
265		North bus loop area	15 days	Thu 5/23/24	Wed 6/12/24																												
266		SE area	10 days	Thu 6/6/24	Wed 6/19/24																												
267		South area	5 days	Thu 6/20/24	Wed 6/26/24																												
268		West area	15 days	Mon 7/1/24	Fri 7/19/24																												
269		Site fence	15 days	Wed 12/20/23	Thu 1/11/24																												
270		<b>Off site work</b>	<b>90 days</b>	<b>Mon 6/5/23</b>	<b>Tue 10/10/23</b>																												
271		<b>PGE relocation work</b>	<b>25 days</b>	<b>Mon 6/5/23</b>	<b>Mon 7/10/23</b>																												
272		<b>Edwards Ave.</b>	<b>57 days</b>	<b>Fri 7/21/23</b>	<b>Tue 10/10/23</b>																												
273		Saw cut shoulder remove asphalt	1 day	Fri 7/21/23	Fri 7/21/23																												
274		Remove radiused corner at Edwards and 8th	2 days	Mon 7/24/23	Tue 7/25/23																												
275		Survey curb, HC ramps, CG-3 inlet, CG-2 inlet (8th)	1 day	Wed 7/26/23	Wed 7/26/23																												
276		Excavate, build CG-3 inlet and CG-2 inlet (8th)	5 days	Thu 7/27/23	Wed 8/2/23																												
277		Grade for curb and gutter	2 days	Thu 7/27/23	Fri 7/28/23																												
278		Proof roll	1 day	Thu 8/3/23	Thu 8/3/23																												
279		Layout/form curb and gutter	3 days	Fri 8/4/23	Tue 8/8/23																												
280		Inspection	1 day	Wed 8/9/23	Wed 8/9/23																												
281		Pour curb and gutter	1 day	Thu 8/10/23	Thu 8/10/23																												
282		Strip/clean	1 day	Fri 8/11/23	Fri 8/11/23																												
283		Rock/grade sidewalks	2 days	Mon 8/7/23	Tue 8/8/23																												
284		Form sidewalk and HC ramps	2 days	Wed 8/9/23	Thu 8/10/23																												
285		Inspection	1 day	Fri 8/11/23	Fri 8/11/23																												
286		Pour sidewalks and HC ramps	1 day	Mon 8/14/23	Mon 8/14/23																												
287		Strip sidewalks	1 day	Tue 8/15/23	Tue 8/15/23																												
288		Grade for paving	1 day	Tue 10/3/23	Tue 10/3/23																												
289		Proof roll	1 day	Wed 10/4/23	Wed 10/4/23																												
290		Pave	1 day	Thu 10/5/23	Thu 10/5/23																												
291		Striping	3 days	Fri 10/6/23	Tue 10/10/23																												







# Dundee Elementary School

ID	Task Mode	Task Name	Duration	Start	Finish	2023					Half 2, 2023					Half 1, 2024					Half 2, 2024					Half 1, 2025								
						F	M	A	M	J	J	A	S	O	N	D	J	F	M	A	M	J	J	A	S	O	N	D	J	F	M	A		
333		Strip moment frame footings	4 days	Thu 8/10/23	Tue 8/15/23						8/10	8/11	8/12	8/13	8/14	8/15																		
334		Strip spread footings	1 day	Thu 8/10/23	Thu 8/10/23						8/10																							
335		Backfill footings	3 days	Mon 8/14/23	Wed 8/16/23						8/14	8/15	8/16																					
336		Form diamond blockouts	10 days	Thu 8/17/23	Wed 8/30/23						8/17	8/18	8/19	8/20	8/21	8/22																		
337		<b>MEP underground</b>	<b>20 days</b>	<b>Thu 8/17/23</b>	<b>Thu 9/14/23</b>						8/17	8/18	8/19	8/20	8/21	8/22																		
338		Trench for underground plumbing	2 days	Thu 8/17/23	Fri 8/18/23						8/17	8/18																						
339		Install underground plumbing	4 days	Fri 8/18/23	Wed 8/23/23						8/18	8/19	8/20	8/21	8/22	8/23																		
340		Inspection/Test	1 day	Thu 8/24/23	Thu 8/24/23						8/24																							
341		Backfill plumbing trenches	1 day	Fri 8/25/23	Fri 8/25/23						8/25																							
342		Trench for underground electrical	2 days	Mon 8/28/23	Tue 8/29/23						8/28	8/29																						
343		Install underground electrical	4 days	Tue 8/29/23	Fri 9/1/23						8/29	8/30	8/31	9/1																				
344		Inspection	1 day	Tue 9/5/23	Tue 9/5/23						9/5																							
345		Backfill electrical trenches	2 days	Wed 9/6/23	Thu 9/7/23						9/6	9/7																						
346		Scratch for Radon Piping	2 days	Fri 9/8/23	Mon 9/11/23						9/8	9/9	9/10																					
347		Install radon piping	2 days	Mon 9/11/23	Tue 9/12/23						9/11	9/12																						
348		Inspection	1 day	Wed 9/13/23	Wed 9/13/23						9/13																							
349		Backfill radon trenches	1 day	Thu 9/14/23	Thu 9/14/23						9/14																							
350		<b>SOG</b>	<b>64 days</b>	<b>Fri 9/15/23</b>	<b>Fri 12/15/23</b>						9/15	9/16	9/17	9/18	9/19	9/20																		
351		Fine grade slab area	3 days	Fri 9/15/23	Tue 9/19/23						9/15	9/16	9/17																					
352		Excavate PIP footing/slab edge	3 days	Mon 9/18/23	Wed 9/20/23						9/18	9/19	9/20																					
353		Form Slab edge	6 days	Tue 9/19/23	Tue 9/26/23						9/19	9/20	9/21	9/22	9/23	9/24																		
354		Form brick ledge block out	6 days	Thu 9/21/23	Thu 9/28/23						9/21	9/22	9/23	9/24	9/25	9/26																		
355		Blockout for gym step down (recessed slab)	3 days	Thu 9/21/23	Mon 9/25/23						9/21	9/22	9/23																					
356		Install vapor barrier	2 days	Thu 9/28/23	Fri 9/29/23						9/28	9/29																						
357		Install rebar	3 days	Fri 9/29/23	Tue 10/3/23						9/29	9/30	10/1																					
358		Inspection	1 day	Wed 10/4/23	Wed 10/4/23						10/4																							
359		SOG pour 1	1 day	Thu 10/5/23	Thu 10/5/23						10/5																							
360		Strip perimeter forms	3 days	Fri 10/6/23	Tue 10/10/23						10/6	10/7	10/8																					
361		Install waterproofing	5 days	Wed 10/11/23	Tue 10/17/23						10/11	10/12	10/13	10/14	10/15	10/16																		
362		Install vapor barrier in gym (recessed slab)	2 days	Fri 10/6/23	Mon 10/9/23						10/6	10/7																						
363		Install rebar in gym (recessed slab)	1 day	Tue 10/10/23	Tue 10/10/23						10/10																							
364		Inspection (recessed slab)	1 day	Wed 10/11/23	Wed 10/11/23						10/11																							
365		SOG pour 2 (gym recessed slab)	1 day	Thu 10/12/23	Thu 10/12/23						10/12																							
366		Set up raised stage slab (see note)	3 days	Thu 11/30/23	Mon 12/4/23						11/30	12/1	12/2																					
367		Install EPS Foam	2 days	Tue 12/5/23	Wed 12/6/23						12/5	12/6																						
368		Install underground electrical floor box and conduit	1 day	Thu 12/7/23	Thu 12/7/23						12/7																							
369		Install vapor barrier	1 day	Thu 12/7/23	Thu 12/7/23						12/7																							
370		Install rebar	2 days	Fri 12/8/23	Mon 12/11/23						12/8	12/9																						
371		Inspection	1 day	Tue 12/12/23	Tue 12/12/23						12/12																							
372		Pour raised stage slab	1 day	Wed 12/13/23	Wed 12/13/23						12/13																							
373		Strip stage slab	2 days	Thu 12/14/23	Fri 12/15/23						12/14	12/15																						
374		<b>Front entry canopy</b>	<b>20 days</b>	<b>Mon 7/17/23</b>	<b>Fri 8/11/23</b>						7/17	7/18	7/19	7/20	7/21	7/22																		



# Dundee Elementary School

ID	Task Mode	Task Name	Duration	Start	Finish	2023					Half 2, 2023					Half 1, 2024					Half 2, 2024					Half 1, 2025							
						F	M	A	M	J	J	A	S	O	N	D	J	F	M	A	M	J	J	A	S	O	N	D	J	F	M	A	
417		Excavate PIP footing/slab edge	3 days	Fri 10/6/23	Tue 10/10/23																												
418		Form Slab edge	6 days	Wed 10/11/23	Wed 10/18/23																												
419		Form brick ledge block out	6 days	Mon 10/16/23	Mon 10/23/23																												
420		Install vapor barrier	2 days	Mon 10/23/23	Tue 10/24/23																												
421		Install rebar	3 days	Tue 10/24/23	Thu 10/26/23																												
422		Inspection	1 day	Fri 10/27/23	Fri 10/27/23																												
423		SOG pour 1	1 day	Mon 10/30/23	Mon 10/30/23																												
424		Strip perimeter forms	3 days	Tue 10/31/23	Thu 11/2/23																												
425		Install waterproofing	5 days	Fri 11/3/23	Thu 11/9/23																												
426		<b>Building area C</b>	<b>95 days</b>	<b>Wed 7/12/23</b>	<b>Wed 11/22/23</b>																												
427		<b>Foundation</b>	<b>57 days</b>	<b>Wed 7/12/23</b>	<b>Fri 9/29/23</b>																												
428		Survey building corners	1 day	Wed 7/12/23	Wed 7/12/23																												
429		Foundation layout	2 days	Wed 7/19/23	Thu 7/20/23																												
430		Excavate Area C footings	4 days	Thu 7/27/23	Tue 8/1/23																												
431		Form moment frame footings	9 days	Thu 8/10/23	Tue 8/22/23																												
432		Form spread footings	3 days	Wed 8/23/23	Fri 8/25/23																												
433		Install rebar in moment frame footings	3 days	Fri 8/18/23	Tue 8/22/23																												
434		Install rebar in spread footings	2 days	Mon 8/28/23	Tue 8/29/23																												
435		Install bolts/templates in moment frame footings	6 days	Tue 8/22/23	Tue 8/29/23																												
436		Install bolts/templates in spread footings	3 days	Wed 8/30/23	Fri 9/1/23																												
437		Inspections	1 day	Tue 9/5/23	Tue 9/5/23																												
438		Pour moment frame footings	2 days	Wed 9/6/23	Thu 9/7/23																												
439		Pour spread footings	1 day	Thu 9/7/23	Thu 9/7/23																												
440		Strip moment frame footings	3 days	Fri 9/8/23	Tue 9/12/23																												
441		Strip spread footings	2 days	Fri 9/8/23	Mon 9/11/23																												
442		Backfill footings	3 days	Wed 9/13/23	Fri 9/15/23																												
443		Form diamond blockouts	10 days	Mon 9/18/23	Fri 9/29/23																												
444		<b>MEP underground</b>	<b>20 days</b>	<b>Mon 9/18/23</b>	<b>Fri 10/13/23</b>																												
445		Trench for underground plumbing	3 days	Mon 9/18/23	Wed 9/20/23																												
446		Install underground plumbing	5 days	Wed 9/20/23	Tue 9/26/23																												
447		Inspection/Test	1 day	Wed 9/27/23	Wed 9/27/23																												
448		Backfill plumbing trenches	2 days	Thu 9/28/23	Fri 9/29/23																												
449		Trench for underground electrical	1 day	Mon 10/2/23	Mon 10/2/23																												
450		Install underground electrical	2 days	Tue 10/3/23	Wed 10/4/23																												
451		Inspection	1 day	Thu 10/5/23	Thu 10/5/23																												
452		Backfill electrical trenches	1 day	Fri 10/6/23	Fri 10/6/23																												
453		Scratch for Radon Piping	2 days	Mon 10/9/23	Tue 10/10/23																												
454		Install radon piping	2 days	Tue 10/10/23	Wed 10/11/23																												
455		Inspection	1 day	Thu 10/12/23	Thu 10/12/23																												
456		Backfill radon trenches	1 day	Fri 10/13/23	Fri 10/13/23																												
457		<b>SOG</b>	<b>28 days</b>	<b>Mon 10/16/23</b>	<b>Wed 11/22/23</b>																												
458		Fine grade slab area	3 days	Mon 10/16/23	Wed 10/18/23																												

