

**CITY OF DUNDEE
PARKS ADVISORY COMMITTEE MEETING**

Meeting will be Teleconferenced via Zoom

Join Zoom Meeting: <https://us02web.zoom.us/j/89008830601>

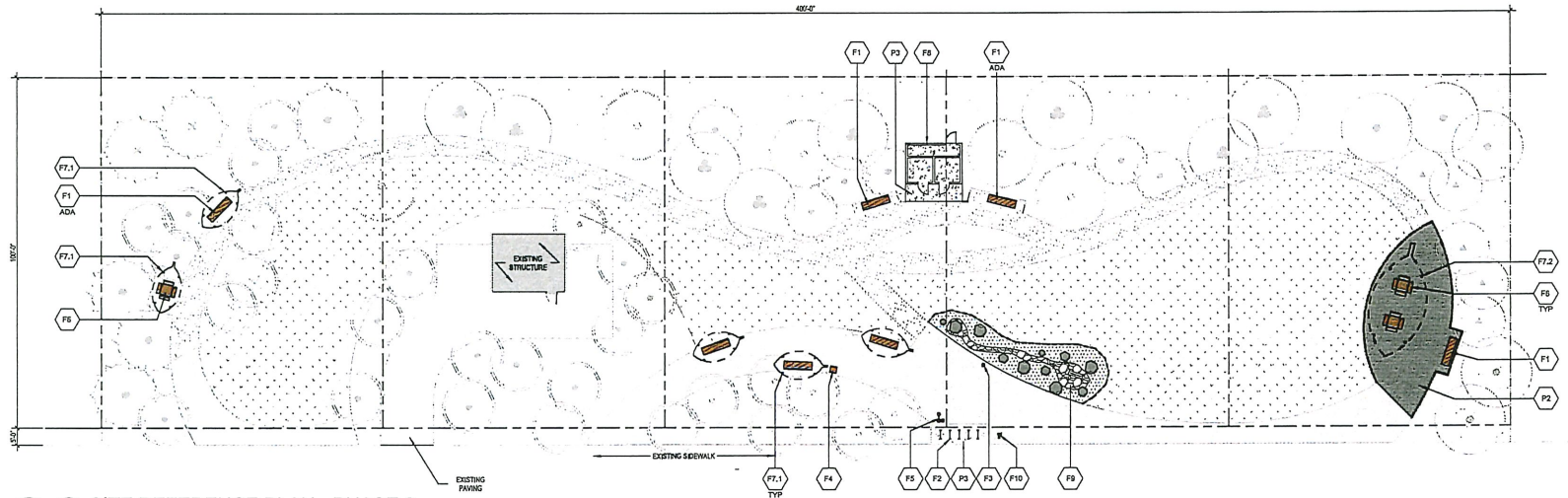
By Phone: 1-301-715-8592

Meeting ID: 890 0883 0601

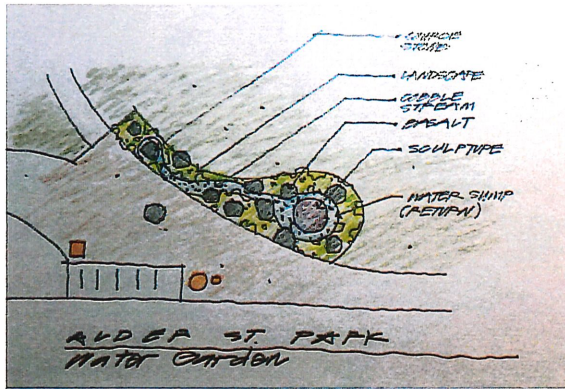
**December 1, 2021
7:00 P.M.**

- 1. Call to Order**
- 2. Public Comments**
- 3. Alder Street Park Facility Plan**
 - **Phase 2**
 - **Park Name**
- 4. First Street Mini-Park**
- 5. Adjournment**

© 2020 Copyright protected. See Design Agreement. For use on this project only. Unauthorized reproduction of any part of this material is prohibited.



1 SITE REFERENCE PLAN - PHASE 2
1/16" = 1'-0"



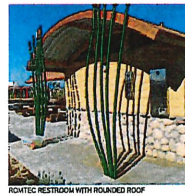
2 WATER GARDEN ENLARGEMENT
1/8" = 1'-0"



LEAF SHELTER - 16 X 30



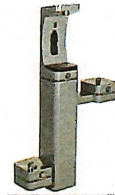
LEAF SHELTER - 8 X 14



RESTROOM WITH ROUNDED ROOF



WATER SOURCE FOR WATER GARDEN



HAWS DRINKING FOUNTAIN



BIKE WORK STATION

LEGEND - SITework

SYMBOL	TYPE	QUANTITY
	EXISTING LAWN	11,720 SF
	PLANTING AREA	SEE PLANTING PLAN
	ALUMINUM EDGING PERMALOC - CLEANLINE	SEE SITEWORK PLAN
	ALUMINUM EDGING PERMALOC - STRUCTURE EDGE	SEE SITEWORK PLAN

SCHEDULE OF FINISHES						
SYMBOL	IMAGE	TAG	Material Description	MANUFACTURER	MODEL	AREA (SF)
		P1	CRUSHED BASALT	CLACKAWAS LANDSCAPE http://www.clackawas-landscape.com/	1/4" MINUS CRUSHED BASALT	280.97 SF
		P2	BRICK PAVING	NATURAL MATERIALS https://www.naturalmaterials.com/	HOLLAND PAVEN CASCADE BLEND	344.57 SF
		P3	CONCRETE PAVING	LOCAL SUPPLIER	LIGHT BROOK FINISH	60.00 SF
		P4	ALUMINUM EDGING - CLEANLINE	PERMALOC https://permaloc.com/edging/cleanline/	CLEANLINE - 3"10" x 8"	54.00 SF
		P5	ALUMINUM EDGING	PERMALOC https://permaloc.com/edging/structure-edge/	STRUCTURE EDGE	54.00 SF

FURNISHING SCHEDULE					
TAG	Material	Description	MANUFACTURER	MODEL	QUANTITY
FURNISHING					
F1	THAMER BENCH		COLLUMBA CASCADE http://www.collumba-cascade.com/	MODEL 8 FT COLUSSUS BENCH W/ BACK COLOR GRANITE POWDER COAT MOUNTING SURFACE MOUNT	
F2	BIKE RACK		HUNTICO https://www.huntico.com/comm/mtb-hike-cas/	MODEL 10 BIKES 24" x 24" CORRAL PARKS NOT DIPPED GALVANIZED MOUNTING SURFACE MOUNT	
F3	PET WASTE STATION		PET WASTE ELIMINATOR https://www.petwaste-eliminator.com/	MODEL 36" x 24" PET WASTE ELIMINATOR STATION	
F4	TRASH RECEPTACLE		COLLUMBA CASCADE http://www.collumba-cascade.com/	MODEL PARKWAY 2064HT HAMPER TOP LITTER CONTAINER PARKS STANDING WATER REPELLANT WOOD PRESERVATIVE MOUNTING SURFACE MOUNT	
F5	DRINKING FOUNTAIN WITH OUTDOOR BOTTLE FILL		HAWS 3600		
F7.1	OVERHEAD CANOPY		POLYGON	LEAF - 8X14	
F7.2	OVERHEAD CANOPY		POLYGON	LEAF - 16X30	
F8	RESTROOM		ROULETTE	MODEL 2021 - 16133	
F9	OUTDOOR BIKE WORKSTAND		SARS	PUBLICWORK STAND	

SERA
ARCHITECTURE
URBAN DESIGN + PLANNING
INTERIOR DESIGN

PORTLAND/OAKLAND
SEASIDE/ELZOLM

REGISTERED
SR2

DANIEL K. JENKINS
ORIGINS
10/16/03
LANDSCAPE ARCHITECT

ALDER STREET PARK
- Concept Plan -

REVISIONS

SITework PLAN - PHASE 2
LS101.2

CONSTRUCTION DOCUMENTS

CHECKED BY: [Signature] DATE: 09 JULY 2021
PROJECT NO: 2103041

1/10/2021 1:53:12 AM SERA Design Inc/ALDERST.PARK

Local names associated with the Geography of Dundee and their meaning/origin

Dundee

Gaelic for Fort Fire, The area may have been named this because of its location on a hill and the red clay Jory soils located there.

Cehalem

The Tualatin Kalapuya word meaning the “outside place”. It refers to the ancestral territory of the Tualatin Kalapuya people including today’s Chehalem Valley, Chehalem Mountains, Newberg, Dundee, and the Red Hills.

Park Name Ideas:

Some context

Many of these name suggestions are in the chinuk wawa language. This is a regional trade language of peoples from throughout the Pacific Northwest. It is also a spoken language on the Grand Ronde Reservation and taught in our language immersion classrooms. There are not upper-case letters in chinuk wawa, so the punctuation provided is accurate. Not all English words translate well for public use because the language has many more letters in its alphabet as well as additional sounds not found in English.

The names below are intended to be read before the word park. Ex. tipsu palach Park

Kalapuya

This is the name of the indigenous people of the Willamette valley. There were over 11 bands of Kalapuya people and each identified as their own tribe. The Tribe of the Dundee area are known as the Tualatin Kalapuya and called themselves the Atfalati (ah-TFAH-lah-tee).

tipsu

Literal translation is “plant”. Since this park features many native plants, using the native word for plant could be a good fit.

shiksh

Literal translation is “friend”. The city inviting the Tribe to offer names for this park and the Tribe offering to gift a name is representative of a friendship between our two governments.

tipsu palach

Literal translation is “plant gift”. This park features native plants and has the ability to be a location of learning about local plants by locals and visitors alike.

tipsu shiksh

Literal translation is “plant friend”. This phrase recognizes plants as living beings that people have an obligation to be in positive relationship with.

Bonus name idea:

paya lamətay

chinuk wawa for Fire Mountain, draws naming convention from the name of Dundee and subsequently the geography of place. Given the site location, this name may be better used elsewhere. If good fire for restoration could ever be introduced to the Harvey Creek trail area, maybe this area could be renamed to this.